



## Key knowledge

Introduce perspective into your work and use paint to capture the sense of depth.

Research the work of Georgia O'Keefe and use your sketchbooks to record your ideas and thoughts.

To consider Georgia O'Keefe's paintings of the New Mexico desert and use sketchbooks to capture ideas.

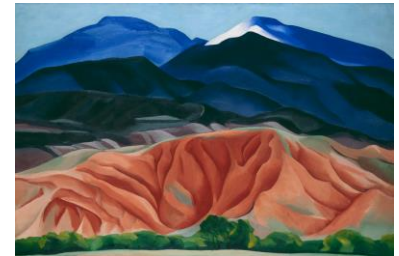
Use line sketches to capture some perspective in locality.

Use tutorials to help develop ideas.

Decide what to focus on and use the knowledge gained from the tutorial to create a piece of art showing perspective.

## Vocabulary

<b>Vanishing point</b>	The place where something moves so far away from your view that it just vanishes.
<b>Perspective Drawing</b>	The representation of three-dimensional objects or spaces in two dimensional artworks.
<b>Tone</b>	The lightness or darkness of colors used, which can help to create a sense of depth or distance in art.
<b>Shading</b>	A technique used in art to represent light and shade by varying the colour and intensity of the medium being used.
<b>Wash</b>	A wash drawing is a type of artwork. The artist uses a brush to spread a fine layer of color over a broad surface evenly enough so that no brush marks are visible in the finished product. The color is typically diluted ink or watercolor.



## Prior Learning -

